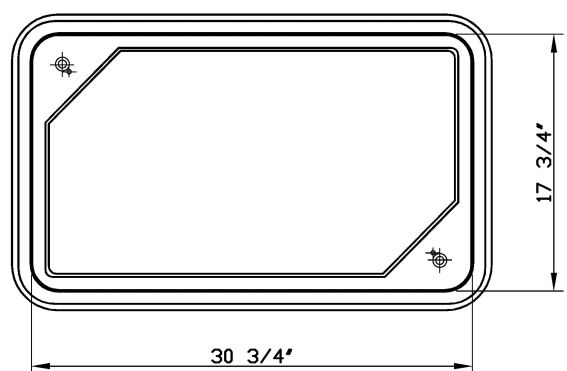
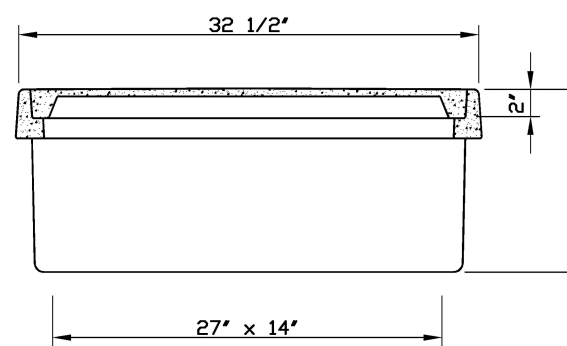


SURFACE RESTORATION

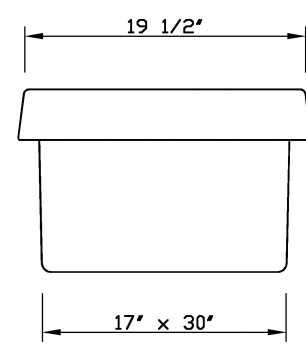
ENGINEERING STANDARDS 2022			
REVISIONS		ENGINEERING DIVISION CITY OF POMPAÑO BEACH	SURFACE RESTORATION
BY	DATE		
		SCALE: N.T.S.	DATE: MAY 2022 DWG. NO. 505-1



TOP VIEW



BOX & COVER SECTION

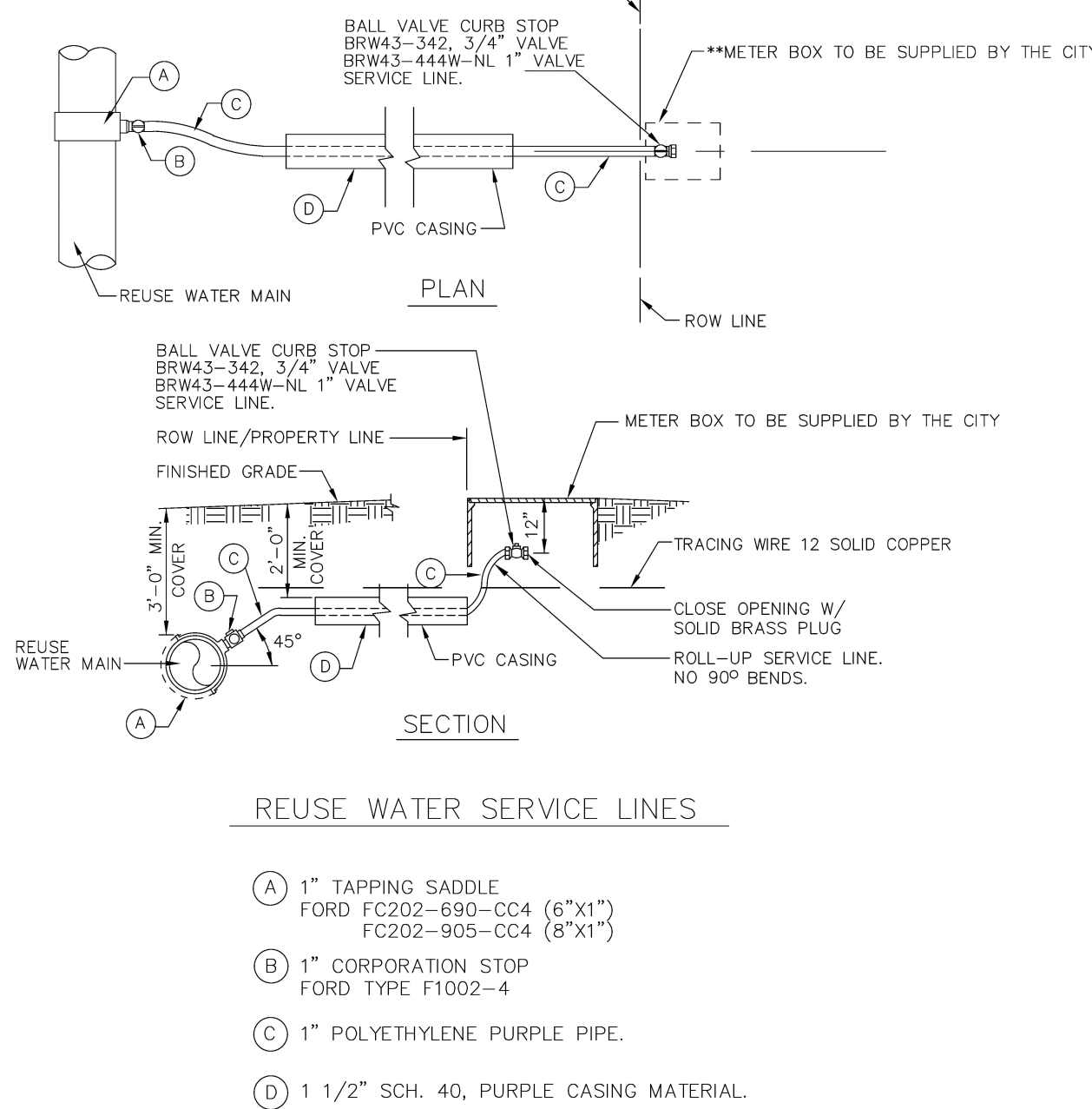


END VIEW

- NOTES
- MATERIAL: FIBERGLASS REINFORCED POLYMER CONCRETE AND FIBERGLASS REINFORCED POLYMER.
 - COVER, COLLAR AND BOX ARE COLOR PURPLE, PANTONE 522C
 - FLARED WALL BOXES ARE NESTABLE
 - NON - SKID TEXTURED SURFACE LID

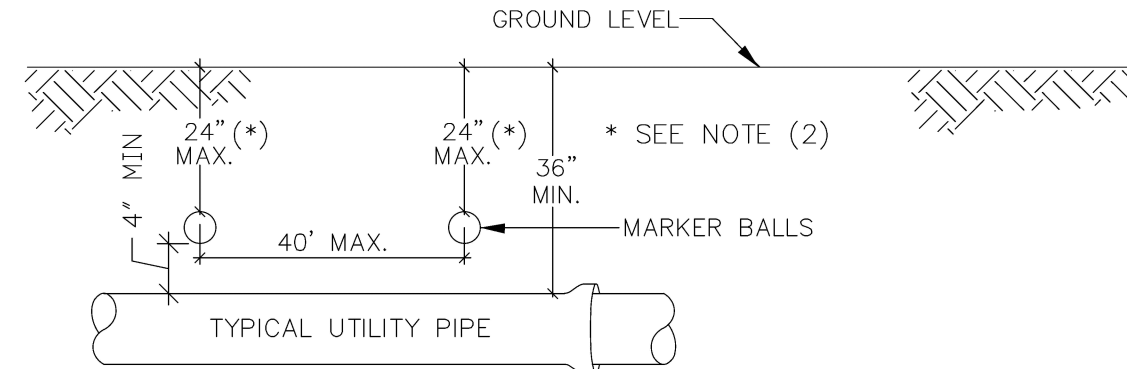
- (1') 11 x 18 METER STRAIGHT WALL BOX
(1 1/2') 13 x 24 METER STRAIGHT WALL BOX
(2') 17 x 30 METER STRAIGHT WALL BOX

ENGINEERING STANDARDS 2022			
REVISIONS		ENGINEERING DIVISION CITY OF POMPAÑO BEACH	REUSE METER BOX
BY	DATE		
S.S.	11-2018		
		SCALE: N.T.S.	DATE: MAY 2022 DWG. NO. 510-3



TYPICAL 3/4" AND 1" REUSE WATER SERVICE

ENGINEERING STANDARDS 2022			
REVISIONS		ENGINEERING DIVISION CITY OF POMPAÑO BEACH	1" REUSE WATER SERVICE
BY	DATE		
A.S.	08-2021		
		SCALE: N.T.S.	DATE: MAY 2022 DWG. NO. 506-1



GENERAL NOTES:

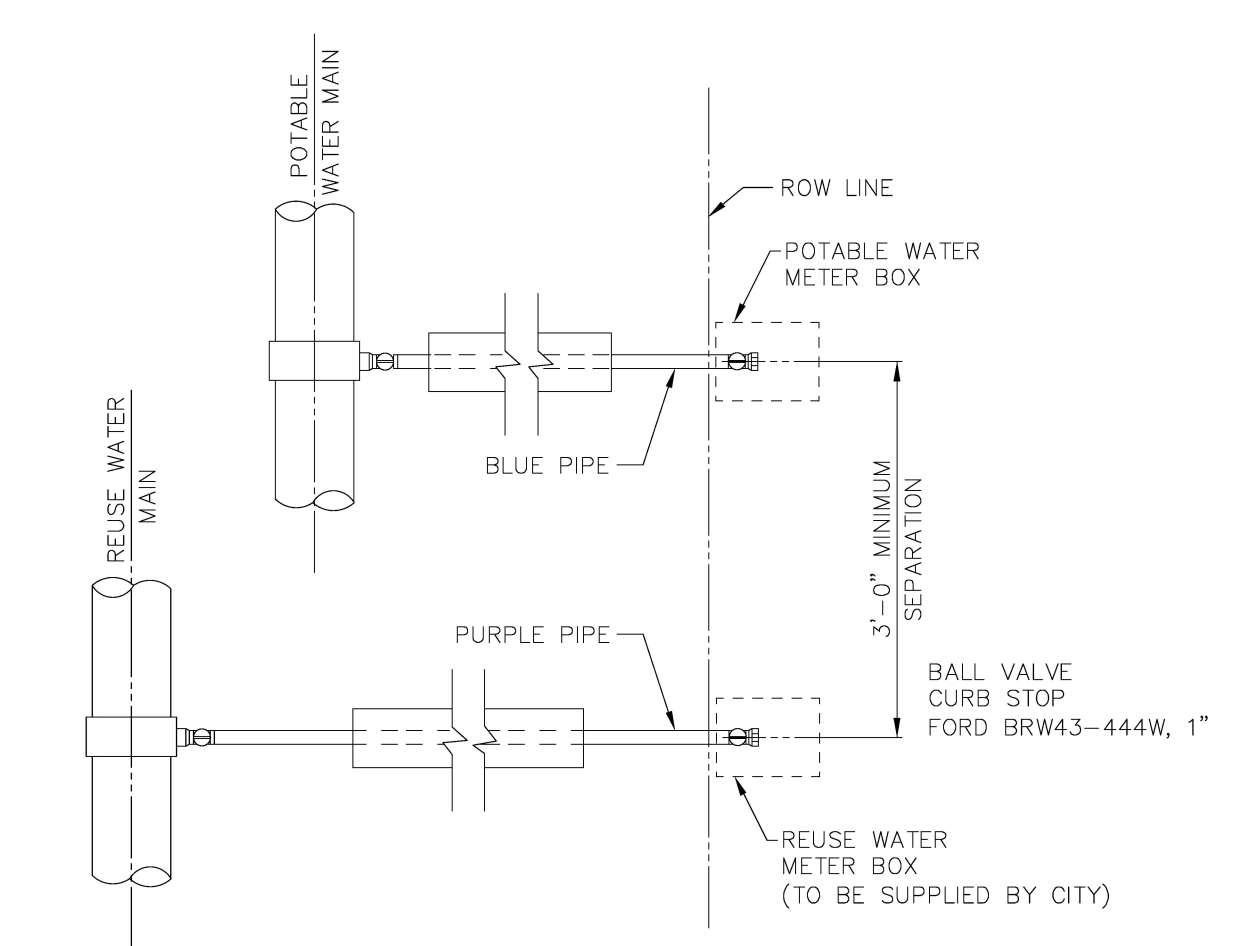
- ALL UTILITY PIPE SHALL BE INSTALLED WITH 4"Ø MARKING BALLS PLACED EVERY 40' AND AT EVERY FITTING, FOR IDENTIFICATION AND WARNING PURPOSES, BURIED ABOVE THE PIPE AT A MAXIMUM DEPTH OF 24 INCHES OR AS APPROVED BY THE OWNER. IT SHALL BE COLOR CODED AND WORDED AS FOLLOWS:
REUSE WATER.
A. COLOR: PURPLE (PANTONE 522C)
B. LETTERING: NON-POTABLE WATER
C. FREQUENCY OF MARKER BALLS SHALL BE 66.35 Khz.
D. THE MARKER BALLS CAN BE BURIED IN ANY ORIENTATION.

THE MARKER BALLS SHALL BE DETECTABLE BY STANDARD METAL DETECTION EQUIPMENT AND SHALL BE MANUFACTURED BY TEMPO OR 3M LOCATOR SYSTEM OR EQUIVALENT (FREQUENCY 66.35 Khz)

- FOR LARGE DIAMETER PIPE INSTALLED AT DEPTHS BELOW 4'-0" MARKER BALLS SHALL BE PLACED AT A MAXIMUM DEPTH OF 4'-0" BELOW GRADE *

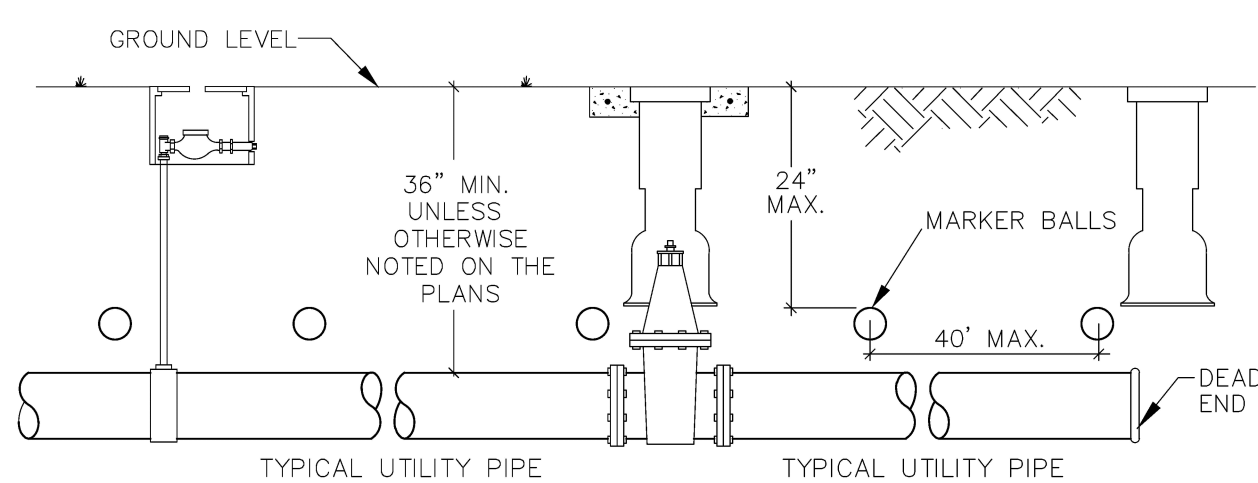
REUSE WATER PIPE IDENTIFICATION

ENGINEERING STANDARDS 2022			
REVISIONS		ENGINEERING DIVISION CITY OF POMPAÑO BEACH	REUSE WATER PIPE IDENTIFICATION
BY	DATE		
TCW	09/07		
SS	05/08		
		SCALE: N.T.S.	DATE: MAY 2022 DWG. NO. 511-1



METER BOX LOCATION

ENGINEERING STANDARDS 2022			
REVISIONS		ENGINEERING DIVISION CITY OF POMPAÑO BEACH	METER BOX LOCATION
BY	DATE		
		SCALE: N.T.S.	DATE: MAY 2022 DWG. NO. 510-1

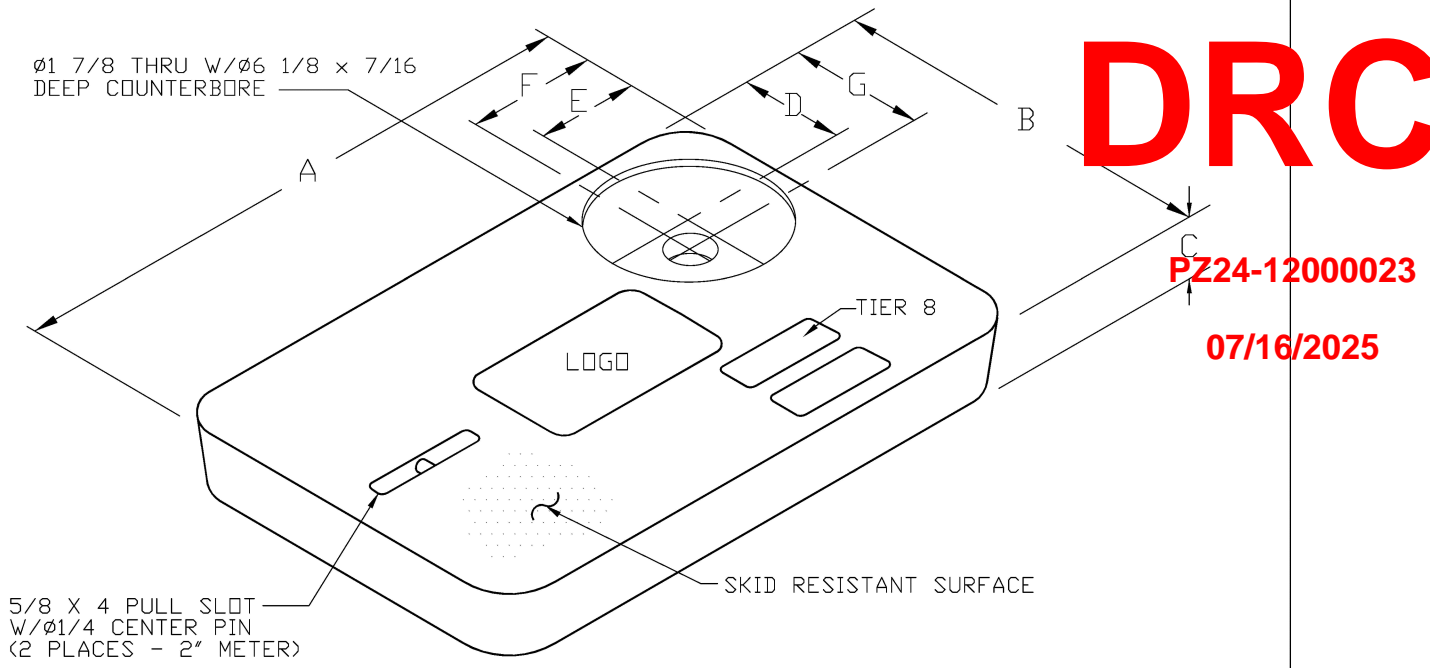


GENERAL NOTES:

- ALL NONMETALLIC PIPE SHALL BE INSTALLED WITH 12 THHN SOLID COPPER TRACING WIRE.
- THE MARKER BALLS MUST BE INSTALLED DIRECTLY ABOVE THE PIPE.
- MARKER BALLS SHALL BE INSTALLED AT 40' O.C.
- BALL COLOR CODING:
REUSE WATER SYSTEM: PURPLE

UTILITY PIPE AND MARKER BALLS LOCATION

ENGINEERING STANDARDS 2022			
REVISIONS		ENGINEERING DIVISION CITY OF POMPAÑO BEACH	MARKER BALLS LOCATIONS
BY	DATE		
TCW	09/07		
		SCALE: N.T.S.	DATE: MAY 2022 DWG. NO. 512-1



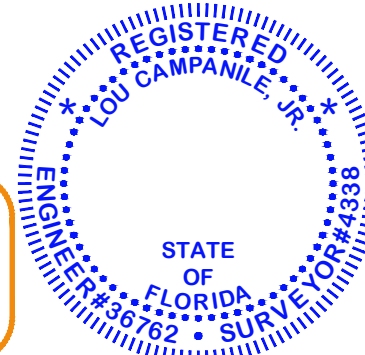
METER BOX COVER DIMENSIONS (IN)						
METER SIZE	A	B	C	D	E	F
1"	18 1/8"	11 1/4"	1 3/4"	3 3/4"	4"	4 9/16"
1 1/2"	23 1/4"	13 3/4"	2"	4"	4"	4 9/16"
2"	30 1/2"	17 1/2"	2"	4"	4"	4 9/16"

NOTES

- CUSTOMER IS CITY OF POMPAÑO BEACH FLORIDA
LOGO TO BE SPECIFIED: REUSE WATER
DO NOT DRINK
NO BEBER
- FITS NEPTUNE R450 RADIO READ
- THIS COVER IS RATED FOR A STATIC DESIGN LOAD OF 8,000 LBS. (35,548 N)
OVER A 10 (254) X 10 (254) AREA AND MUST PASS A MINIMUM STATIC TEST
LOAD OF 12,000 LBS (53,376 N).
- COVER COLOR IS PURPLE. PANTONE 522C
- NON - SKID TEXTURED SURFACE LID
- METER BOX COVER SHOULD BE RATED FOR TRAFFIC CONDITION AS
DETERMINED BE ENGINEER OF RECORD.

TYPICAL METER BOX COVER

ENGINEERING STANDARDS 2022			
REVISIONS		ENGINEERING DIVISION CITY OF POMPAÑO BEACH	REUSE METER BOX COVER
BY	DATE		
S.S.	12-2012		
S.S.	11-2018		
		SCALE: N.T.S.	DATE: FEB. 2022 DWG. NO. 510-2



for

RJS ARCHITECTS, INC.

ELIAS APARTMENT BUILDING
216 SE 23 AVENUE
POMPAÑO BEACH, FLORIDA 33062-5304

POMPAÑO BEACH WATER REUSE DETAILS

PROJECT NO. 5391
DATE 10/9/24
REVISIONS
DRAWING
WS-9
SHEET
9 OF 10